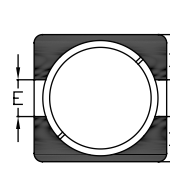
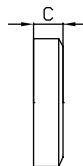
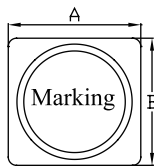
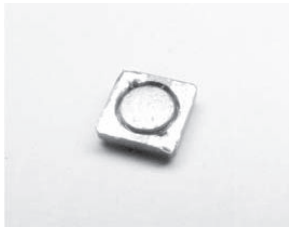


### HSDI4818 TYPE

#### TYPE

#### DIMENSION

##### HSDI4818



A:  $4.8 \pm 3.0$   
B:  $4.8 \pm 3.0$   
C:  $1.8 \pm 0.2$   
D: 1.6 REF  
E: 1.6 REF

#### SPECIFICATION

Item	Inductance ( $\mu\text{H}$ )	Tolerance (%)	Isat max (A)	DCR max ( $\text{m}\Omega$ )	SRF typ. (MHz)
HSDI48181R0N	1.0	$\pm 30$	2.60	30	90
HSDI48181R8N	1.8	$\pm 30$	2.10	41	90
HSDI48182R7N	2.7	$\pm 30$	1.55	54	65
HSDI48183R3N	3.3	$\pm 30$	1.55	60	50
HSDI48184R7N	4.7	$\pm 30$	1.65	82	45
HSDI48185R6N	5.6	$\pm 30$	1.35	90	48
HSDI48186R8N	6.8	$\pm 30$	1.10	100	40
HSDI4818100N	10	$\pm 30$	1.00	150	28
HSDI4818150N	15	$\pm 30$	0.70	220	28
HSDI4818180N	18	$\pm 30$	0.70	280	20
HSDI4818220N	22	$\pm 30$	0.60	300	16
HSDI4818330N	33	$\pm 30$	0.50	420	19
HSDI4818101N	100	$\pm 30$	0.30	13500	7

N:  $\pm 30\%$

\* Hong can design any part to your requirements with different inductance.

\* All parameters as this content presented are subject to final specifications both sides confirmed.